



# Human Blood

## How much blood?

Adults have about five quarts of blood in their bodies. Babies are smaller, so they don't need as much blood. A baby has about one quart of blood. As they grow, the amount of blood in their body increases. Children have about three quarts of blood. Color the right number of jars below to show the amount of blood that a baby, a child, and an adult have in their bodies.

**BABY =**



**CHILD =**



**ADULT =**

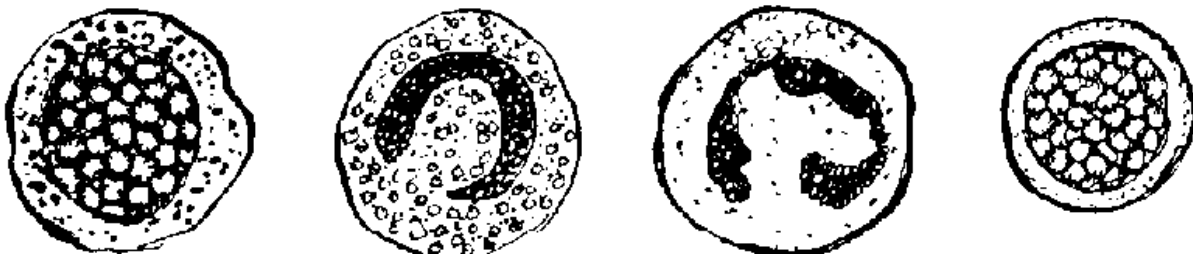


## Color the blood cells:



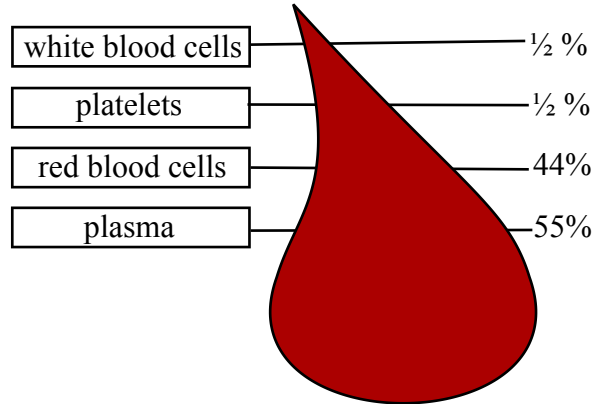
red cells

platelets



white cells

## What's in a drop of blood?



## Make a Candy Model of Blood

mini marshmallows = white blood cells  
 sprinkles = platelets  
 red hots = red blood cells  
 corn syrup = plasma

You will need approximately:

- 1/2 t. mini marshmallows (about 3)
- 1/2 t. sprinkles
- 1 cup + 2 T. + 2 t. red hots
- 1 1/2 cups + 1 t. corn syrup